

Memorial Park Playground Replacement

Barnes Memorial Park playground - Dedham, MA

Capital Budget Presentation

Parks & Recreation Department

January 2026

Playground Replacement Overview

- ▶ Playground Replacement Request
- ▶ Existing playground: 28 years old
- ▶ Proposed action: Full replacement

Why Replacement Is Necessary

- ▶ Typical playground lifespan: 15-20 years
- ▶ Current playground exceeds expected life
- ▶ Increased repairs and limitations

Current Challenges

- ▶ Aging materials and components
- ▶ Limited accessibility
- ▶ Outdated safety design
- ▶ Increasing maintenance effort

Safety & Risk Management

- ▶ Modern playgrounds reduce injury risk
- ▶ Improved fall protection standards
- ▶ Older equipment increases liability exposure

Accessibility & Inclusion

- ▶ Limited access in existing playground
- ▶ Accessible routes
- ▶ Inclusive play elements
- ▶ Use for all abilities

Community Value

- ▶ High-use park feature
- ▶ Serves families, programs, and visitors
- ▶ Visible reflection of Town investment

Financial Perspective

- ▶ Repairs becoming less cost-effective
- ▶ No long-term warranties
- ▶ Replacement resets maintenance cycle

Cost Control & Planning

- ▶ One-time capital investment
- ▶ 20+ year service life
- ▶ Reduced annual maintenance costs

Project Scope

- ▶ Replacement only - no expansion
- ▶ Meets safety standards
- ▶ Meets accessibility standards
- ▶ Within budget constraints

Recommendation

- ▶ Replacement is necessary and timely
- ▶ Aligns with fiscal responsibility
- ▶ Approve funding



Not at Min. Depth for Fall Height of Particular Equipment

Photo



Comments

Lack of surfacing. Additional EWF needed

Hazard Level

1 - Loss of life, permanent disability or body part

Edging Not Securely Anchored

Photo



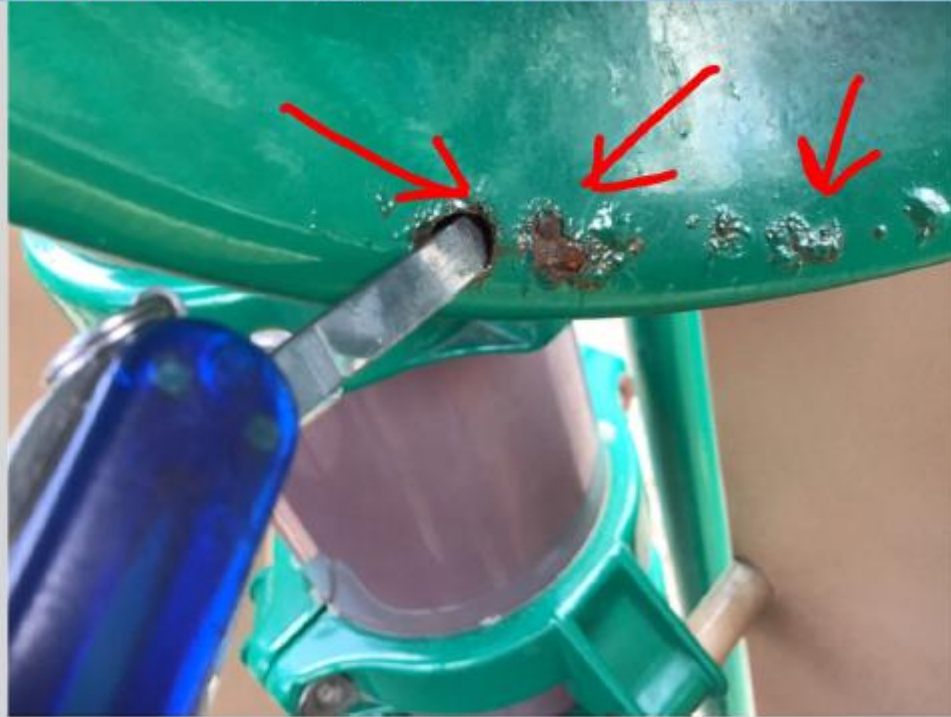
Hardware - Corrosion, badly worn, loose, missing, coated chains Photo

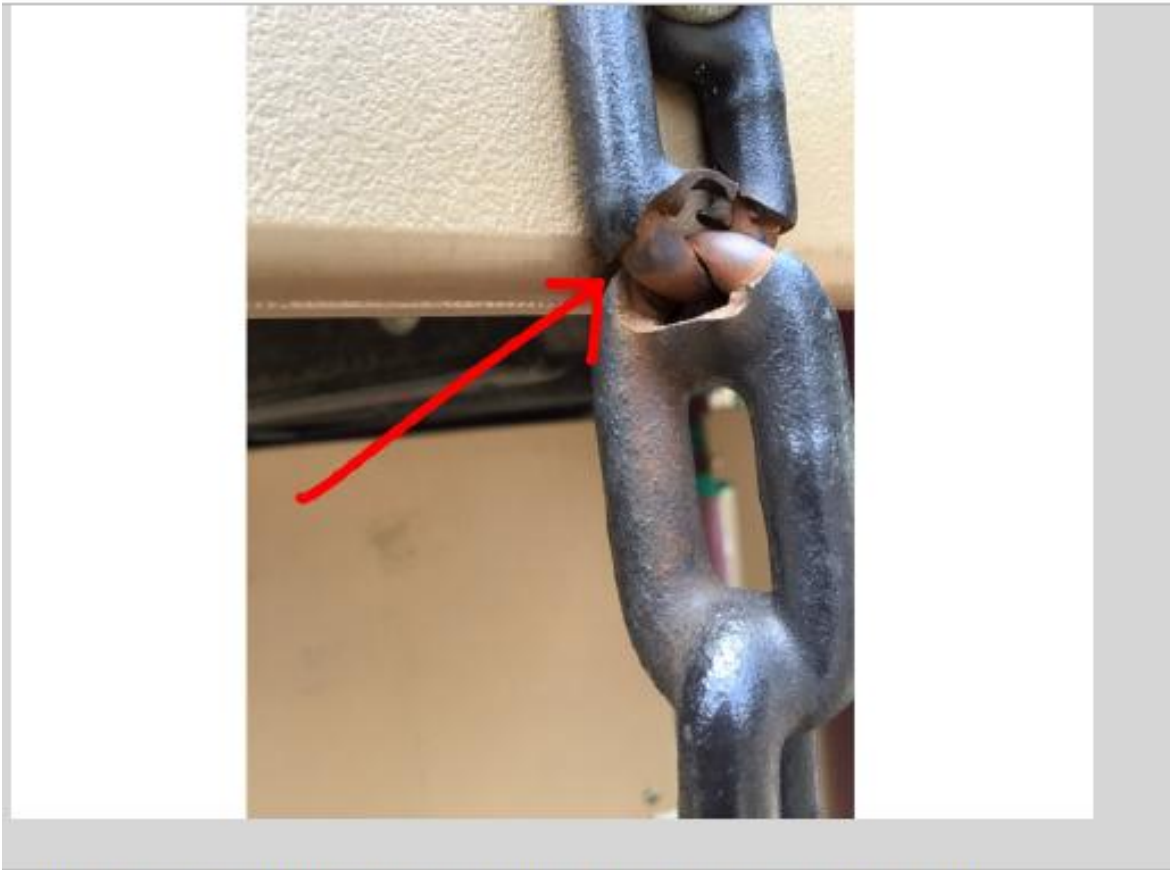
Photo



Hardware - Corrosion, badly worn, loose, missing, coated chains Photo

Photo





'Chain onto chain' rub has weakened the component.



See loose hardware and a worn wiggle ladder. Replace asap. Hazard 1 due to concrete, rubber wear pad and lack of surfacing.

1 - Loss of life, permanent disability or body part

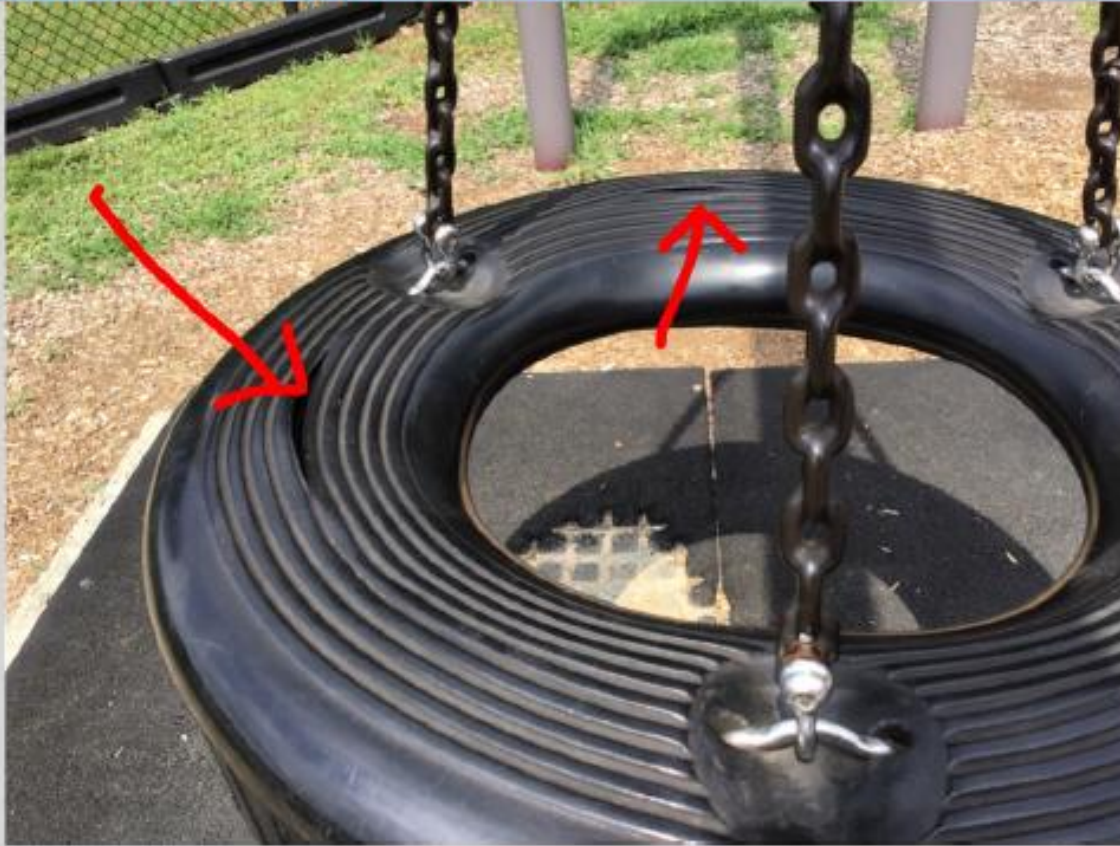
Photo



Comments

There is a burn in the plastic panel. Do not purchase any plexiglass or a lot of moving parts. This is a high traffic area; and a hiding/ hang out spot.

cracked, stipped, rusted Photo



Replace the cracked tire.

2 - Serious injury or illness resulting in temporary disability

amaged, or deteriorated materials Photo



Slats are failing on the Dumor benches. Check to see if they may be still be under warranty.

3 - Minor (non-disabling) injury/Non-compliant



See above

3 - Minor (non-disabling) injury/Non-compliant

? “Why can’t we just repair what we have?”

Answer

“At 28 years old, repairs are no longer cost-effective. Parts are difficult to source, there are no warranties, and we are extending an asset that has already exceeded its useful life.”

? “What happens if we delay this another year or two?”

Answer

“Delaying increases maintenance costs, liability exposure, and the likelihood of unplanned failures. It does not reduce the eventual replacement cost.”

? “Is this a want or a need?”

Answer

“This is a need. The playground has exceeded its lifecycle and no longer meets modern safety and accessibility expectations.”

? “Are we required to replace it?”

Answer

“While not legally mandated on a specific timeline, continuing to operate aging equipment increases risk and contradicts best practices for municipal asset management.”

? “Can we scale it back to save money?”

Answer

“The proposed design is already right-sized. Scaling back further would compromise safety, accessibility, or durability.”

? “How long will the new playground last?”

Answer

“The expected service life is 20+ years with proper maintenance, supported by manufacturer warranties.”

? “Will this increase annual operating costs?”

Answer

“No. In fact, we expect reduced annual maintenance and fewer reactive repairs compared to the current playground.”

? “Why prioritize this over other needs?”

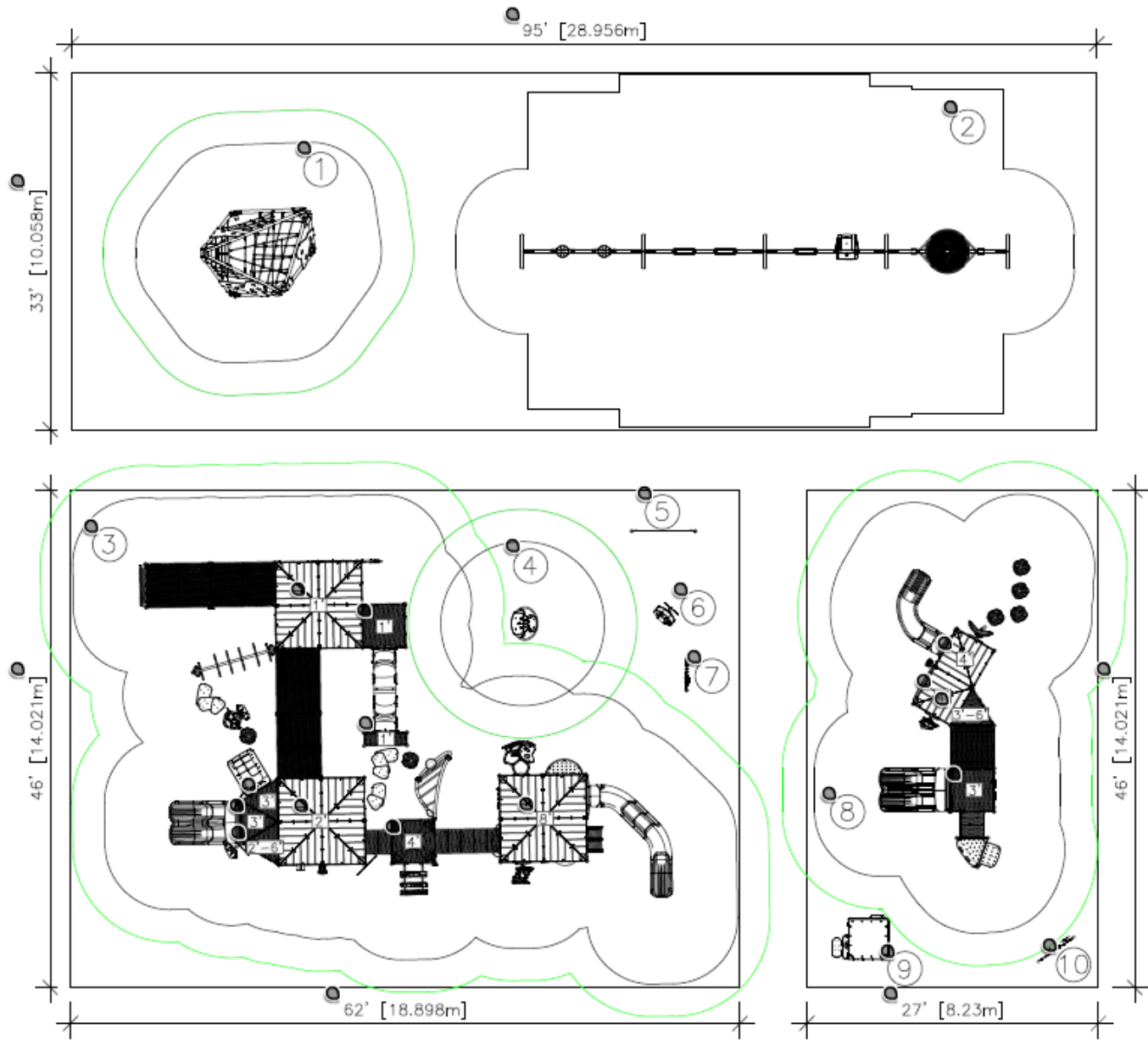
Answer

“This playground is a high-use, high-risk asset that has exceeded its lifespan. Addressing it now prevents larger problems later.”



Dedham MA

Premier Park & Play
Jambette

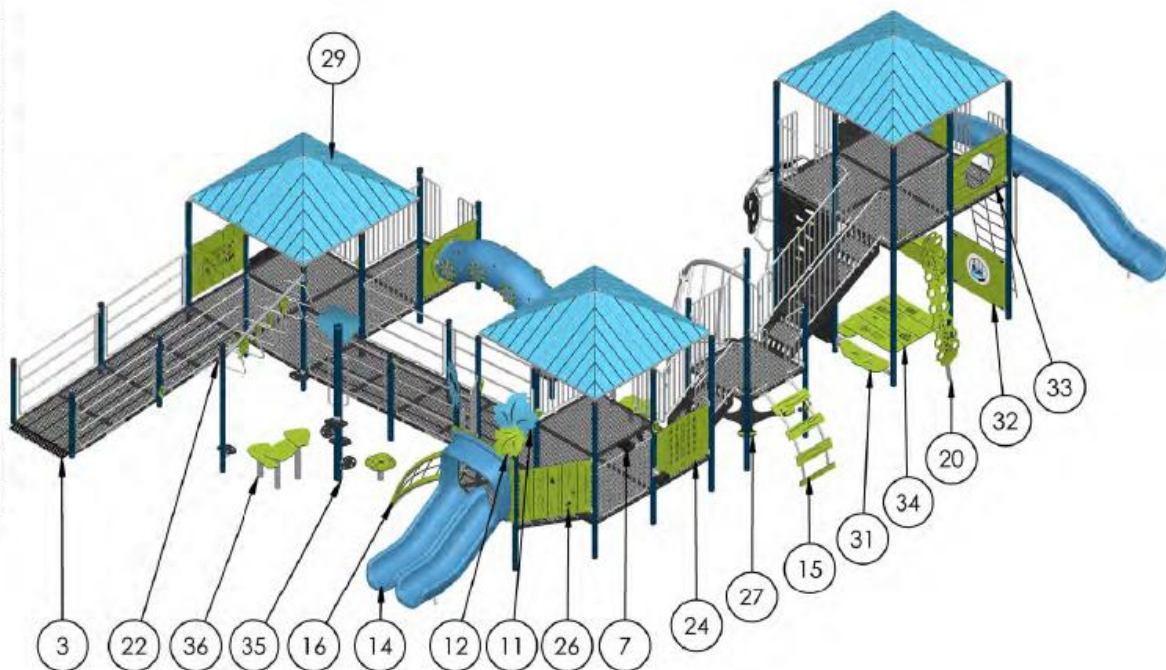
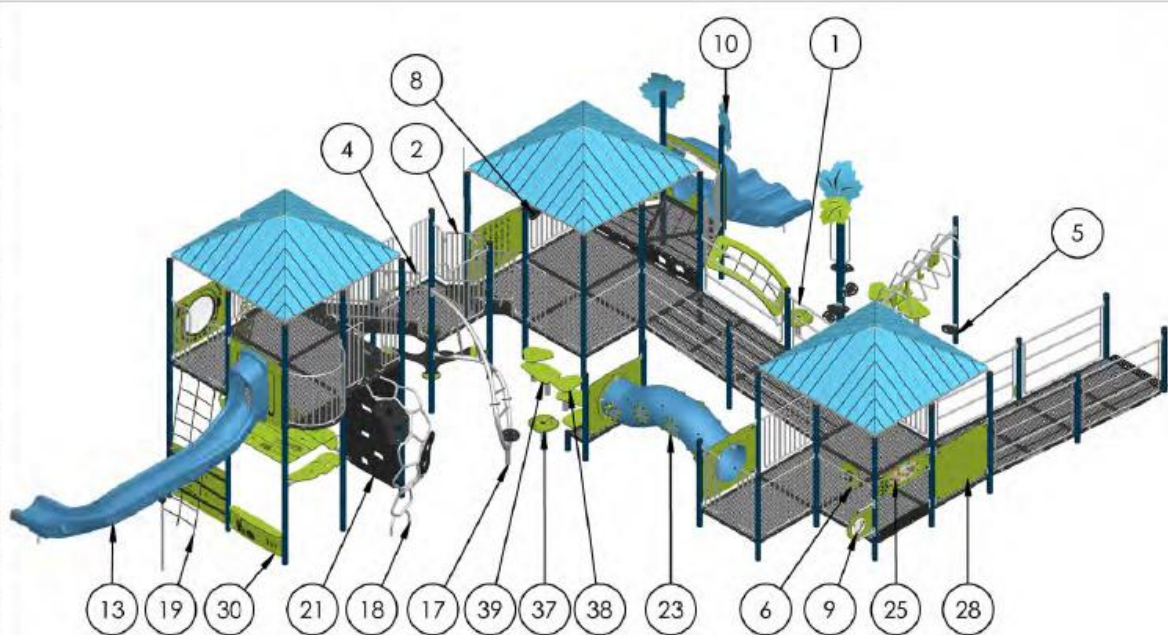




Dedham MA

Premier Park & Play
Jambette

#	- DESCRIPTION -
1	Wheelchair ramp (Diff.1')(3.5 dia.post)(Handrail)
2	2' Stairs between two platforms (44-44)
3	Wheelchair ramp (1')(3.5 dia.post)(Handrail)
4	4' Stairs between two platforms (44-44)
5	Step (3.5 dia.post)
6	Ship Wheel (Safety railing)
7	Telescope (Safety railing)
8	Phone (3.5 dia.post)
9	Marbles manipulation accessory (3.5 dia.post)
10	Sun Top
11	Maple leaf Top
12	Maple leaf ornament (3.5 dia.post)
13	8' LUX Slide (LO)
14	3' LUX Double Slide (I-I)(44)
15	4' Plank ladder
16	3' Wave Climber
17	4' twist climber
18	8' Honeycomb Climber
19	8' Cable net
20	8' Neo climber
21	8' Climbing Wall (44)
22	Clothes line bridge (3.5 dia.post)
23	Caterpillar tunnel with portholes
24	Braille panel (44)
25	Accessible manipulating gear panel (44)
26	Cabin panel (44)
27	Cosy seat-4 (44)
28	Search and find forest panel (44)
29	CitipleX roof (44)
30	Lemonade Game Counter (44)
31	Leaf bench (44)
32	Three in a row game panel (44)
33	Refuge panel with bubble window (44)
34	Safari table (48x48)
35	The 10' sugar maple
36	Stepping Stone (18-24-30)
37	Stump Stepping Stone
38	Stepping Stone (6-12-18)
39	Stepping Stone (12-18)





Dedham MA

Premier Park & Play
Jambette

#	- DESCRIPTION -
1	3' Transfer station (44)
2	Phone (3.5 dia.post)
3	Cosy seat-4 (44)
4	4' LUX Slide (LO)
5	3' LUX Double Slide (I-I) (44)
6	4' Neo climber
7	3'-6 Climbing Wall (44)
8	4' Myria climber
9	Small arched bridge (6" diff) (48) (Ø3.5" post)
10	CitipleX roof (44)
11	Three in a row game panel (44)
12	Lemonade Game Counter (44)
13	Labyrinth on wheel panel (44)
14	Stump Stepping Stone





Saucer Seat • S-24000



BASIC FEATURES

AGE GROUP: 18 months to 12 years old

CHILD CAPACITY: 5 children

DESCRIPTION

In the bird's nest, there is always room for one more. Social development and cooperation meet in this comfortable and durable play structure. IPEMA certified by Huck Seiltechnik as Original Bird Nest (4650).



Children are equipped with safety harness. The seat can hold the weight of an adult 5-14 years old 120 kg maximum

The Iceberg



Cost

Summary

- Base project cost (2025): \$480,000
- Projected base cost (2026): \$510,000 – \$515,000
- If including site work & removal: \$583,000 – \$600,000 (2026 pricing)
- All estimates use the MHEC purchasing contract.
- Contingency 15% \$75,000

Total project \$ 675,000